

Protect your fleet with the most advanced 3G Vehicle Camera in the world!



e1 Marked in Germany

Market leading technology combining video, telematics and 3G.



# Intelligent Telematics

Intelligent Telematics has a global presence currently operating in Europe, USA, the Middle East and Australasia. The company was established due to our client's demands in being able to offer a bespoke and tailored solution incorporating integrated camera technology with tracking and telematics.

Our clients include; large vehicle fleet operators, insurance brokers, insurance companies, and global tracking companies.

Our objectives are identify, understand, and quantify our client's needs and problems, and to advise and implement on the best technology, systems and processes that will improve operational fleet efficiency.

## IT1000 - 3G Vehicle Camera



e1 Marked in Germany

Exclusive to Intelligent Telematics the worlds most advanced vehicle camera combining video, telematics and 3G.

The IT1000 video telematics system (ISO9001 accredited) is an on board GPS/3G HD camera which can be fitted to any vehicle and offer telemetry data over the mobile phone network. As it is hard wired to the vehicle and cannot be removed, the information is always available upon ignition live.

The unit transmits it's speed, GPS position, and G-Force sensor data frequently to a designated server. In the event of a collision or a triggered event, the unit automatically transmits all its data for that event. The video footage and clarity is of the highest quality, and is remotely downloaded to the designated server within minutes, allowing our clients to download and review the video footage as required.

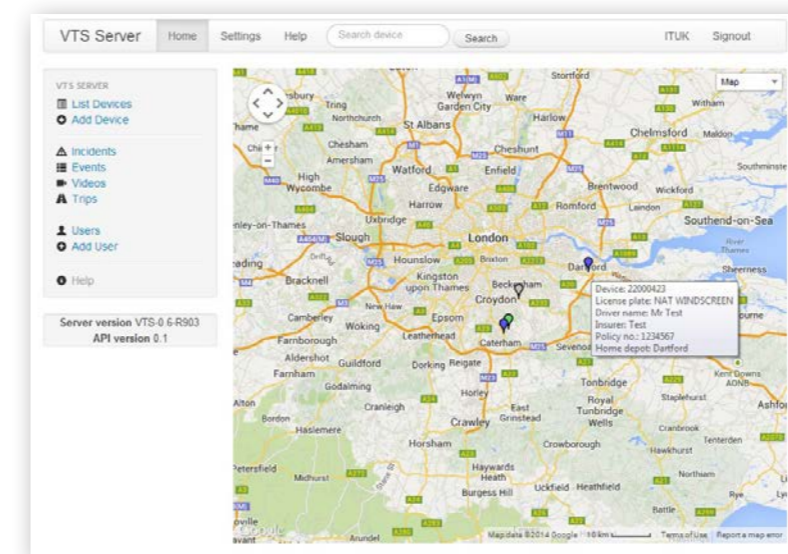
The data transmission to the central servers occurs through VPN-tunnels and can be considered safe. Access to the stored data is only permitted to authorised persons and videos are only stored in the event of an accident.

Beside the unit itself, Intelligent Telematics provides a "backbone" server platform where all the data is stored. A web-based interface allows you to view and manage the data. An API allocates easy access to the data from other software platforms such as fleet management or FNOL (First Notification of Loss)

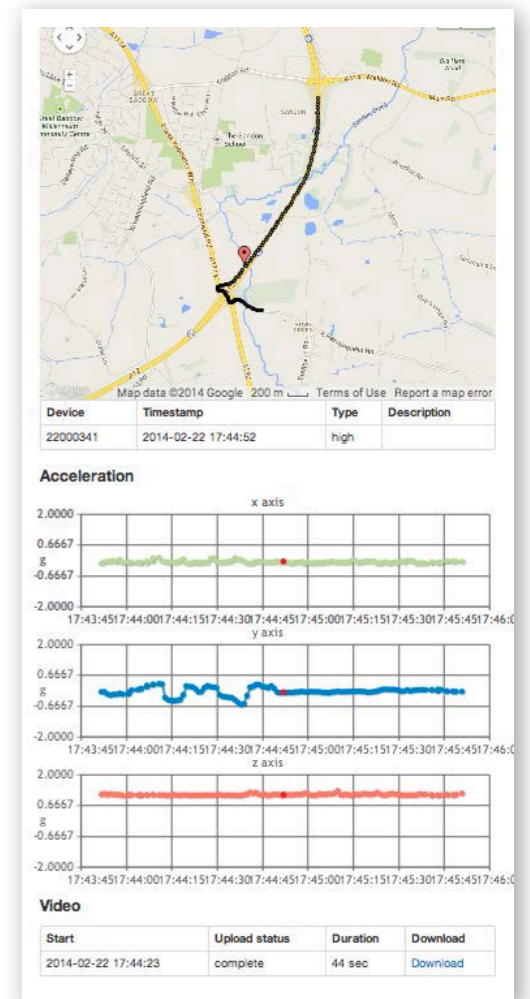
# VTS Server Software

All Intelligent Telematics Partners using the IT1000 will be provided with automatic access the VTS Server Software. The software provides staged levels of authorised access, from supervisor to administrator, allowing control of data output.

The VTS Server Software displays telematics data including GPS (live tracking), speed and G-Force measurements. The IT1000 Camera is configured (as per your requirements) to High, Medium, and Low G-Force triggered events. In the event of a 'High' G-Force incident (i.e accident) an alert is sent by SMS/email notifying of the incident, and the video footage is sent directly to the VTS Server, allowing access to the footage within minutes. In the event of a 'Medium/Low' G-Force event (i.e harsh driving - excessive acceleration/braking/cornering) an alert is sent by SMS/email notifying of this.








Home Page - Depicting Vehicle details and Location.



Example of incident showing Telemetry Data, and Video Footage ready for downloading.

## Key Features

-  Full HD Video - Automatically uploaded to server upon triggered event.
-  Web-Enabled User Interface - Email or screen pop up notification that an event has occurred.
-  Transmission of Speed, GPS position and G-Force data frequently sent to a designated server, through 3G network.
-  Accurately records Speed with GPS Data Recording at 10Hz (10x second), as opposed to industry standard of 1Hz.
-  Auto Calibrated G-Force Sensors.

# Key benefits

- Significantly reduce Operational/Fleet insurance costs.
- First Notification of Loss – Immediate Claim Intervention.
- Increased accuracy/admissible G-Force and GPS data required to defend or help mitigate third party repair costs or injury claims.
- Track and log vehicle journey history - vehicle usage optimisation.
- Prove innocence and what really happened.
- Detect unsafe driving and driver training needs – Alter driver behaviour.

# IT1000 Product Specifications

- Camera weight 135G. Wide angle HD quality lens. 1280p x 720p
- Camera dimensions 92mm \* 45mm \* 40mm
- Live real time tracking at 1 second – 300 second intervals.
- 3 'over the air' remotely configurable trigger levels (low, medium, high)
- Low & Medium events are stored to internal memory
- When a high trigger is hit (configurable between 0.45 – 2.00g in 0.05 increments) camera will send back a remotely configurable video x seconds pre / y seconds post g-shock event, and video to operators along with the telemetry data.
- Notification of low, medium and high events takes less than a second from anywhere in the World.
- Email or screen pop up notification that an event has occurred as well as an icon colour change in software..
- Upload of videos usually takes 2-4 minutes and can be viewed whilst still uploading. Secure private VPN for data protection and information security.
- Video is wide angle HD quality
- Collection of speed data at 10Hz (10 times a second) compared to the 1Hz of other cameras. This means we get accurate deceleration curve's and can report impact speeds much more accurately.
- The IT1000 uses American GPS satellites as well as Russian GLONASS system.
- The IT1000 has configurable trigger inputs and outputs as standard (maybe for panic button in, trigger out to third party device).
- Auto updates available over the air.
- High quality 3 Axis G Force sensor.
- Camera auto calibrates the G-Sensor at start up and therefore reports accurate impact forces (other cameras are mounted at different angles and will be registering a positive g-force at a standstill which leads to inaccuracies in reported info. As well as sending the live footage the IT1000 also dual streams to on board memory all continuous footage and event footage simultaneously.
- E1 marked in Germany.
- Anti Glare mounting brackets.
- Input voltage 7-32V.
- Hard wired with in line fuse.
- Camera tested to 95 degrees with cooling fins.
- 3 month internal battery back up.
- Firmware upgrades over the air.
- Remote diagnostics.

Contact us on 084 5548 5447 or email us on [sales@intelligent-telematics.co.uk](mailto:sales@intelligent-telematics.co.uk)